

DJE
 Architecture
 Interiors
 17200 Curtha Lane
 Salinas, CA 93907
 Tel. 831/683-1418
 Fax. 831/683-6385
 david@djelliot.net

David J. Elliott & Associates

Proposed:

**TENANT
IMPROVEMENT**

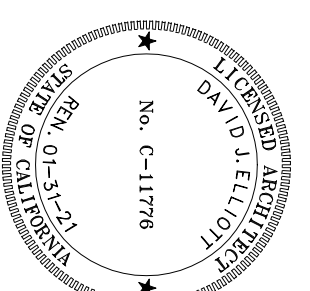
COMINOS LAW
OFFICE

10 W Alisal St.
Salinas, CA 93901

Use of these plans and specifications is restricted to the original site for which they were prepared. Any reuse, reproduction or publication by any person other than the architect without the prior written consent of the architect is prohibited. Title to plans and specifications remain with the architect, and no part of these plans, specifications or drawings shall be used in any way as prima facie evidence of the acceptance of these restrictions.

Revisions	No.	Description	Date

AS BUILT FLOOR PLAN
12-16-19

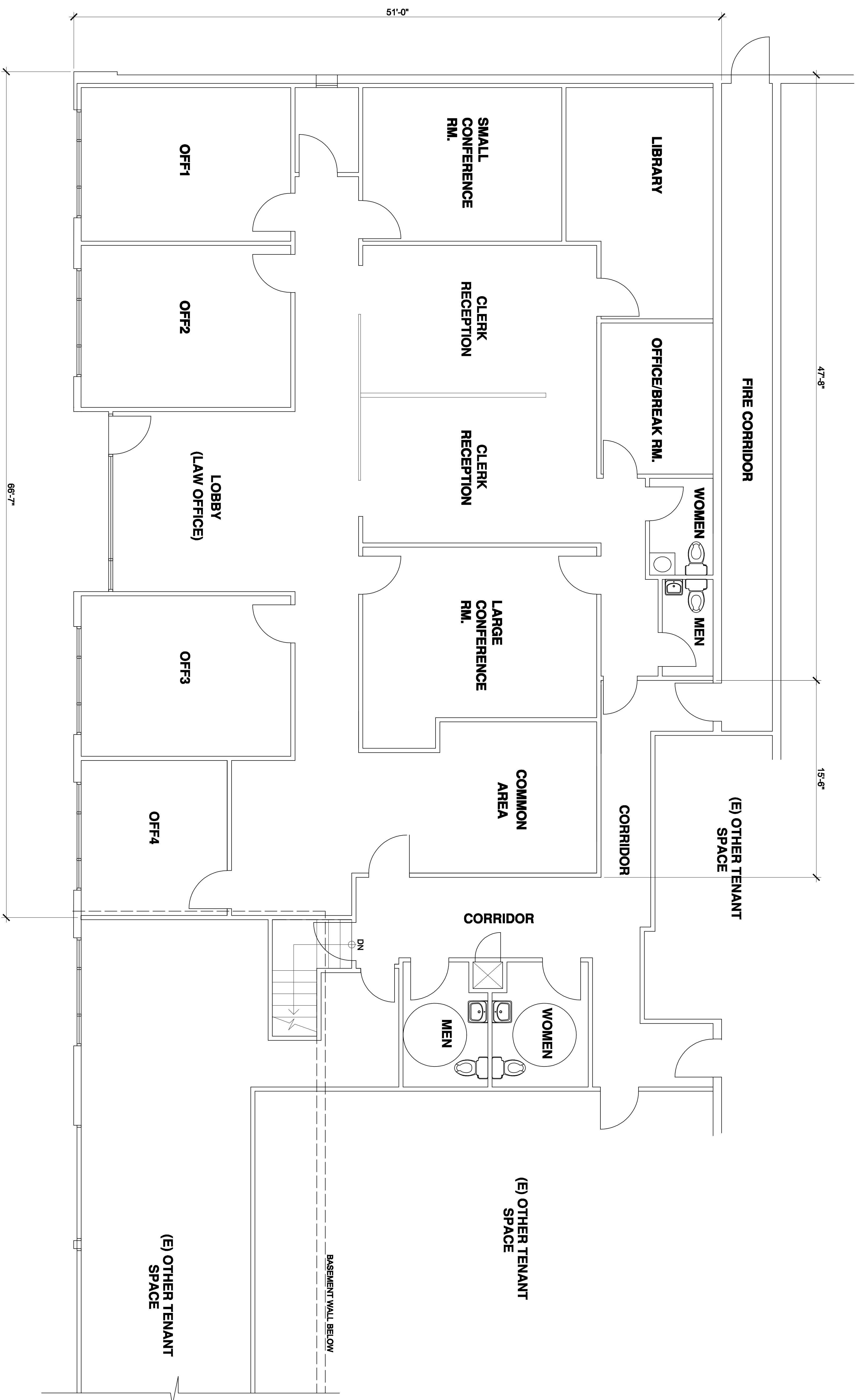


Issue Date **12/16/19**

Drawn By **DJE/CCP**

Project Number **1964**

Sheet Title
**AS BUILT
FLOOR PLAN**



Proposed:

**TENANT
 IMPROVEMENT**

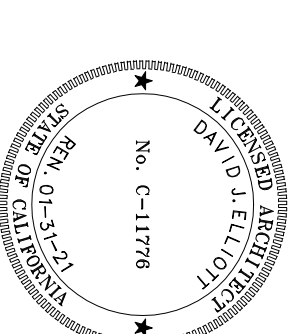
**COMINOS LAW
 OFFICE**

10 W Ailsal St.
 Salinas, CA 93901

Use of these plans and specifications, its
 drawings prepared and application which
 hereof is expressly limited to such use,
 reuse, reproduction or publication by
 any person without the prior written
 permission of the architect, and
 without liability to the architect, and
 without the consent of the architect,
 shall constitute an admission of the
 architect's liability for the accuracy
 of these restrictions.

Revisions	No.	Description	Date

**AS BUILT FLOOR PLAN
 12-16-19**



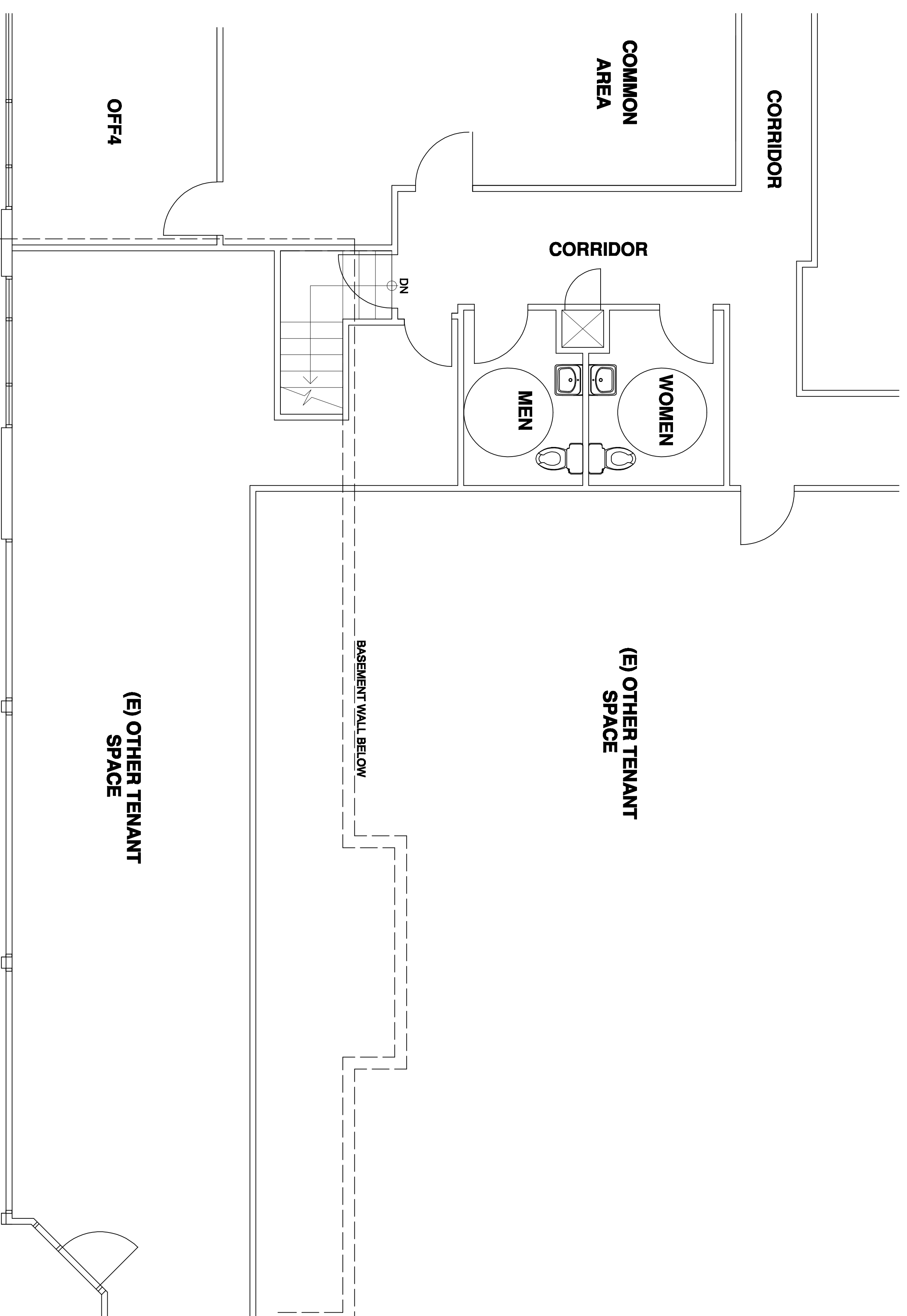
Issue Date **12/16/19**

Drawn By **DJE/CCP**

Project Number **1964**

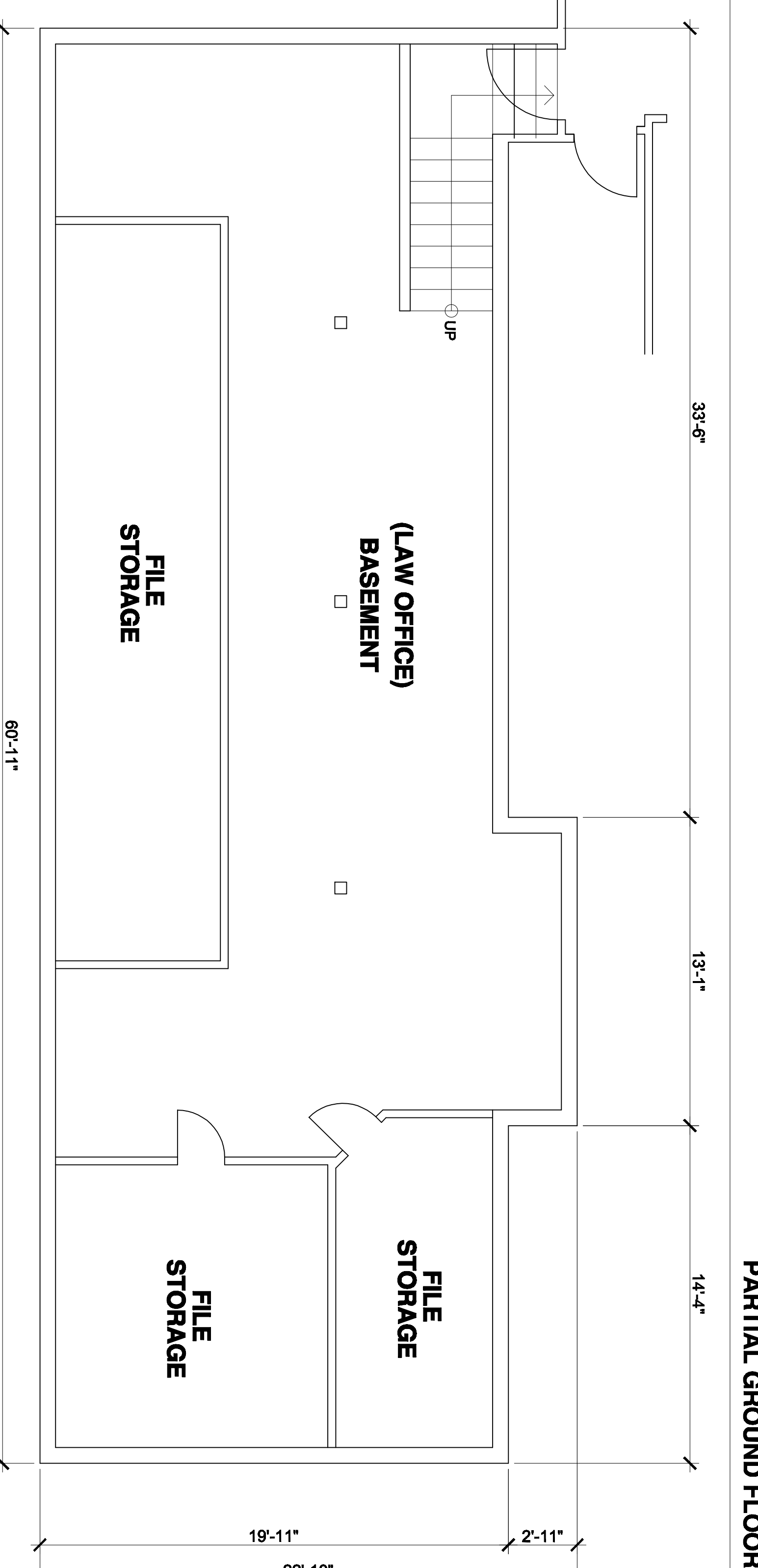
Sheet Title
**AS BUILT
 FLOOR PLAN**

Sheet Number **A2.0A**



PARTIAL GROUND FLOOR PLAN 1/4"=1'-0"

2



BASEMENT PLAN 1/4"=1'-0"

1